

Wisden Road, Stevenage, Hertfordshire, SG1 5JE
£1,150 Per Calendar Month

H&M
sales and lettings

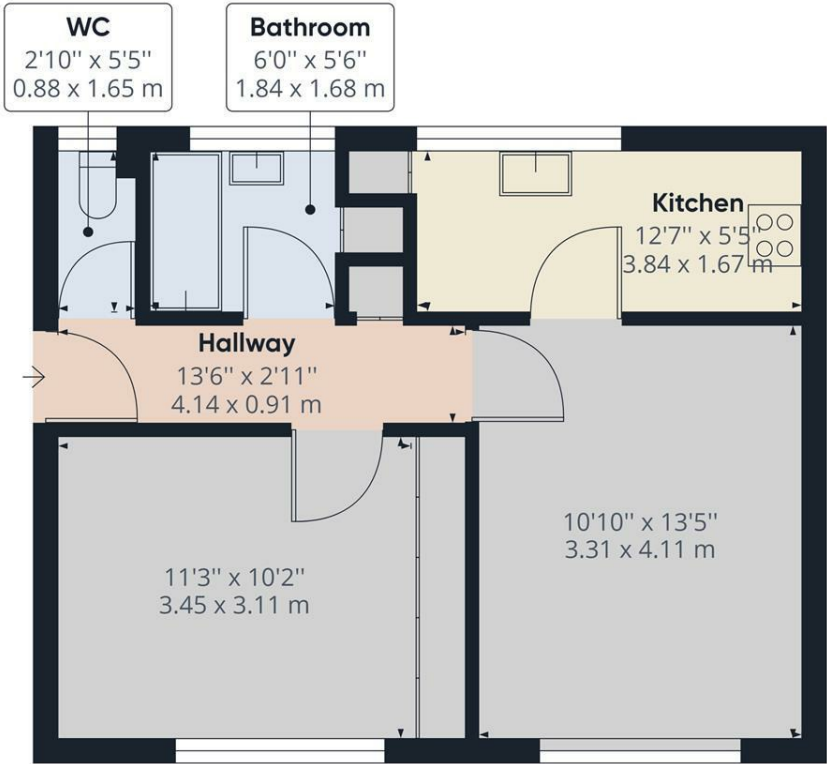


Homes & Mortgages are delighted to offer this one-bedroom apartment, located in the Pin Green area of Stevenage. Accommodation is on the first floor and comprises of a large double bedroom with built-in wardrobes, a Spacious living area, a modern fitted kitchen, and a separate WC to the bathroom. The property is further complemented with on-road parking and is available from the 2nd March 2026. Contact us today to arrange a viewing.



86 High Street
Stevenage
Hertfordshire
SG1 3DW
01438 728444

stevenage@homesandmortgages.co.uk



Approximate total area⁽¹⁾
455.20 ft²
42.29 m²

(1) Excluding balconies and terraces

While every attempt has been made to ensure accuracy, all measurements are approximate, not to scale. This floor plan is for illustrative purposes only.

GIRAFFE360

| Energy Efficiency Rating | | |
|---|---------|-------------------------|
| | Current | Potential |
| Very energy efficient - lower running costs | | |
| (92 plus) A | | |
| (81-91) B | | |
| (69-80) C | 75 | 79 |
| (55-68) D | | |
| (39-54) E | | |
| (21-38) F | | |
| (1-20) G | | |
| Not energy efficient - higher running costs | | |
| England & Wales | | EU Directive 2002/91/EC |